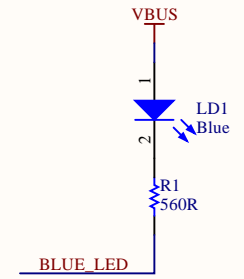
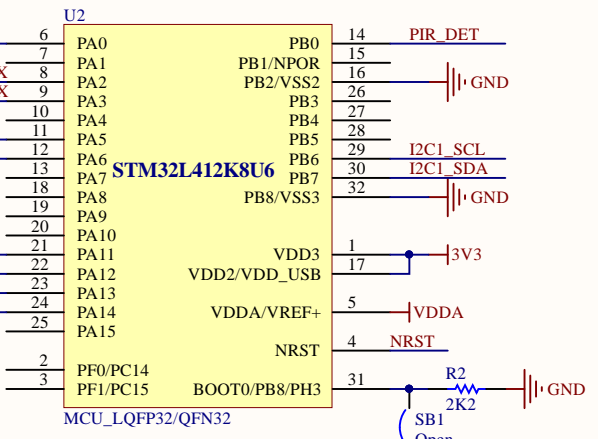
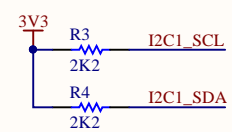
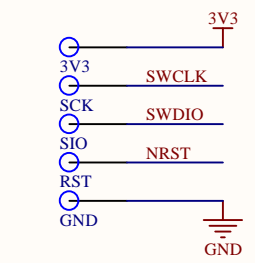
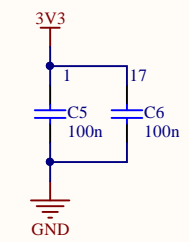
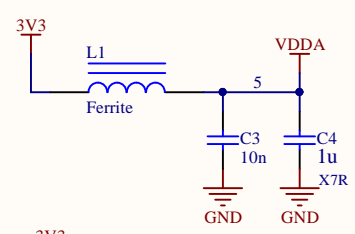
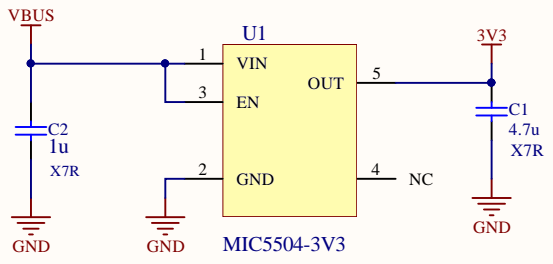
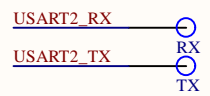
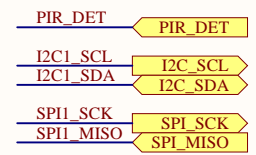


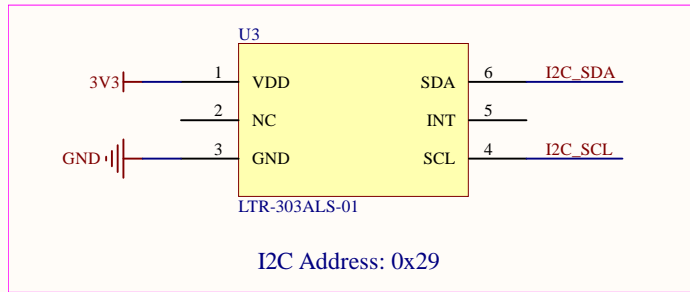
STM32L412 - Cortex M4F, 64kB Flash, 40kB SRAM



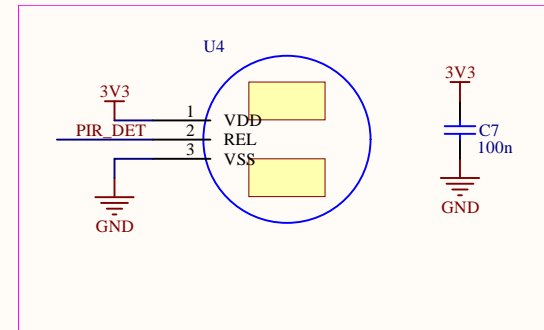
BOOT: Short circuit during reset to boot from USB DFU bootloader



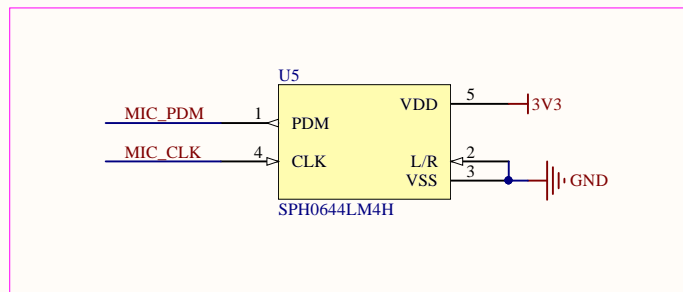
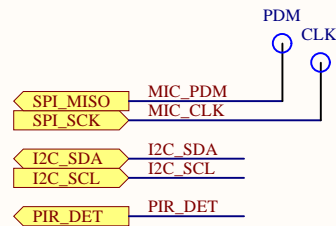
LTR-303ALS: Ambient light sensor

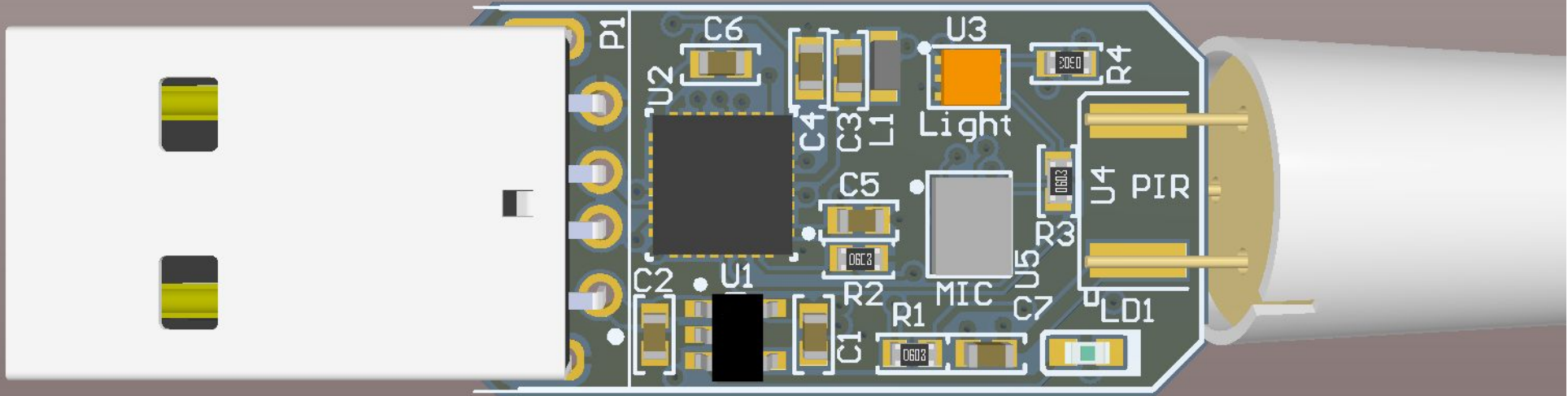


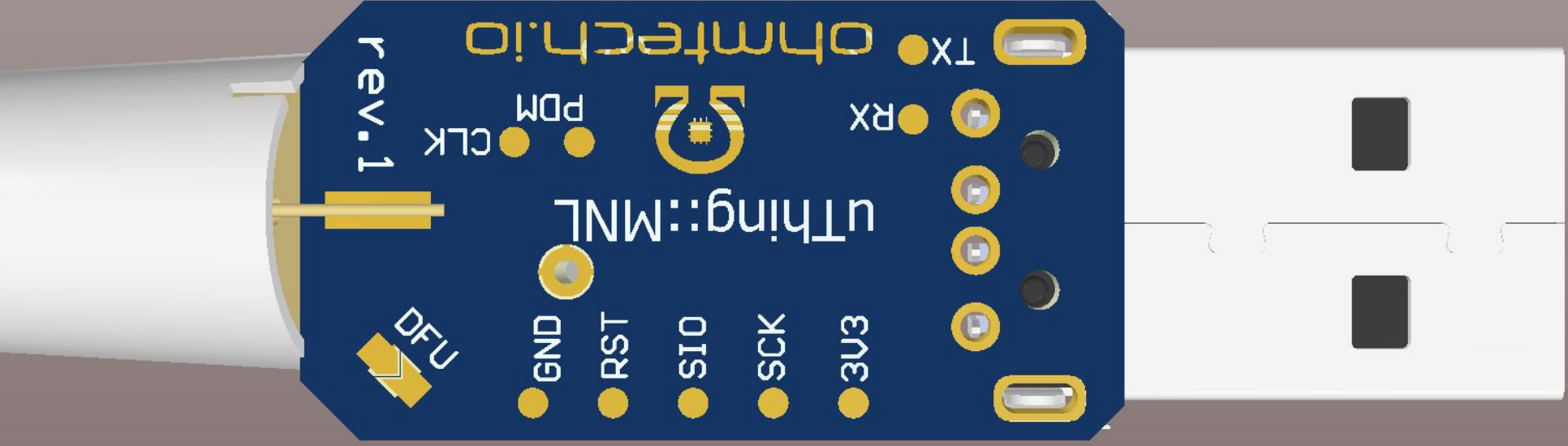
Pyroelectric Infrared Sensor

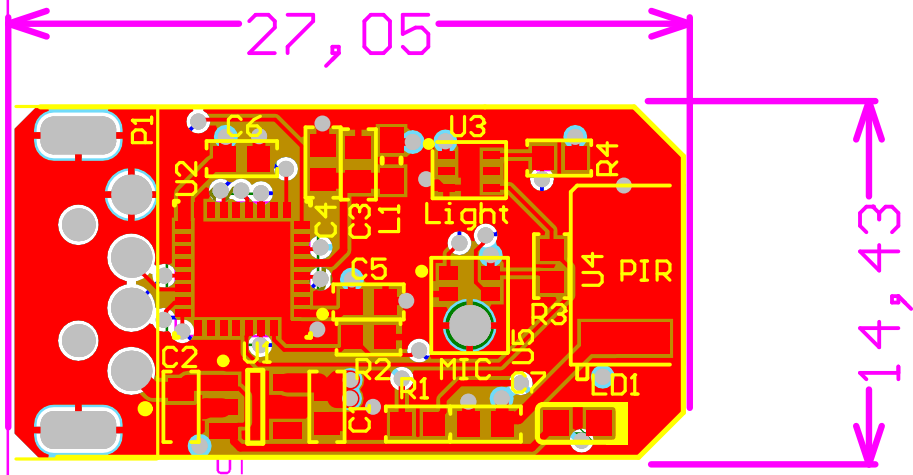


SPH0644LM4H: PDM out, MEMS Microphone









Structures: 6mil

Smallest via: $\geq 0.25\text{mm}$

4-Layer stackup, thickness 1.55mm